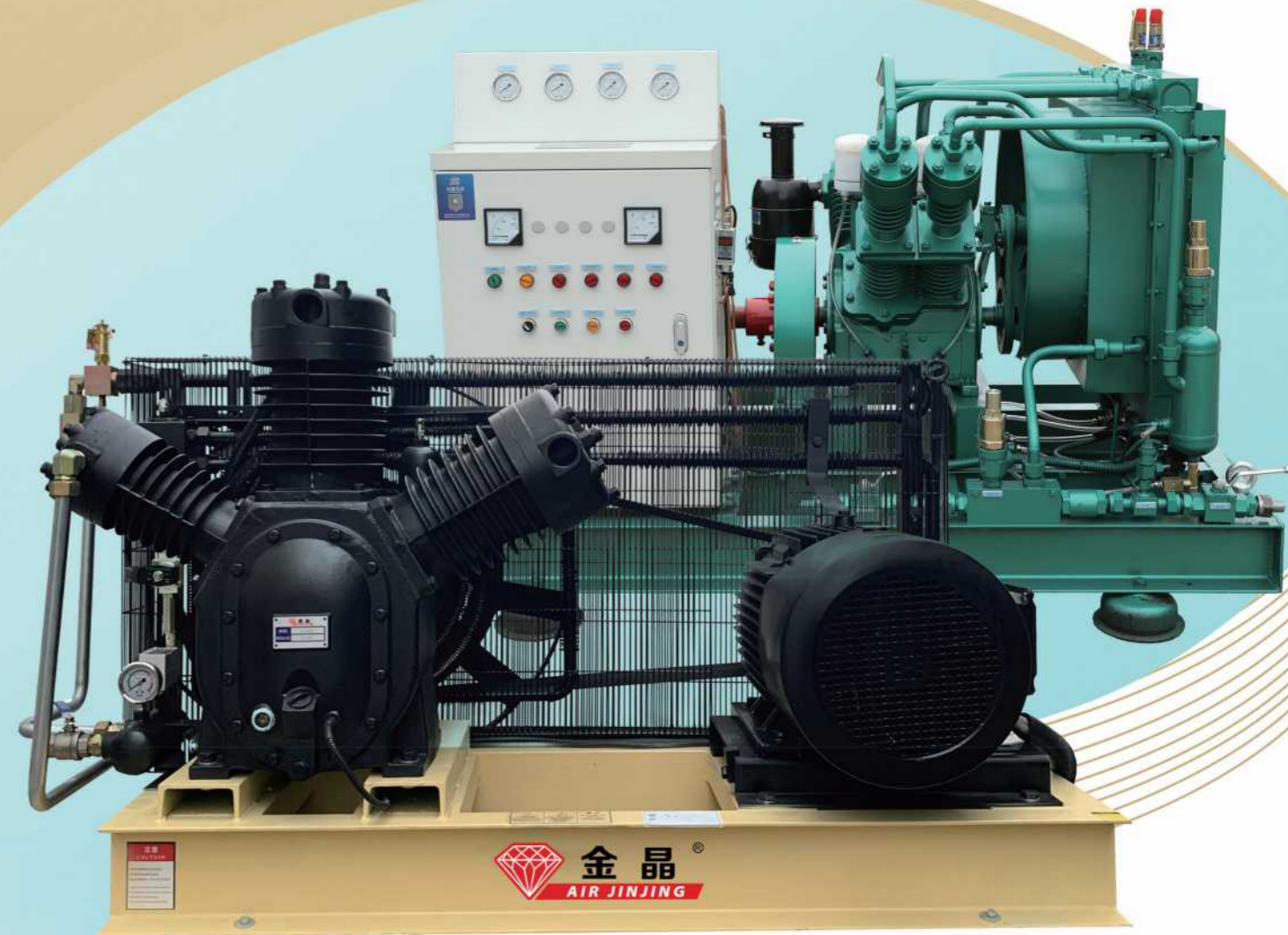




WhatsApp



WeChat



Wechat: 15320082297

Whatsapp/Mob: 8615320082297

E-Mail: 15320082297@126.com

jj15320082297@gmail.com

Website: www.jjaircompressor.com

Youtube/Facebook/pinterest: jj15320082297@gmail.com

pinterest/Linkedin: 15320082297@126.com

Instagram: 15320082297jj Twitter: @AirJinjing

Reciprocating Air Compressor

Tianjin Jinjing Gas Compressor Manufacturing Co.,Ltd.



Our Company

01

Tianjin Jinjing Gas Compressor Manufacturing Co.,Ltd.



Tianjin Jinjing Gas Compressor Manufacturing Co.,Ltd. founded in 2005, is a leading high technology of machine and equipment manufacturer integrating the design, R&D, production, sales and service for air compressors & Mining Equipment. Adopting advanced technology, design concept and quality control, and we are able to provide customized products to meet customers' OEM needs.

Our company has more than 520 employees, including 86 senior technicians and professional engineers. Our technical team provides our customers with professional air system solutions. With the total 15000 square meters of the facility, four modern advanced production lines are built up to ensure production capacity to meet customer requirements.

Our company has been awarded the honorary title of "Tianjin high-tech enterprise" and our products enjoy high honors in the industry. Our company has the ISO9001 certification and was awarded the qualification certificate of equipment through military contracts in 2018.

We have a complete system of after-sales service and quality assurance. The company's material purchase, inspection, manufacturing, installation, and testing are strictly in accordance with the ISO procedures. which will ensure each compressor has reliable quality and has a complete record to trace, if needed.

2005
Founded

15000
Square Meters

16
Years



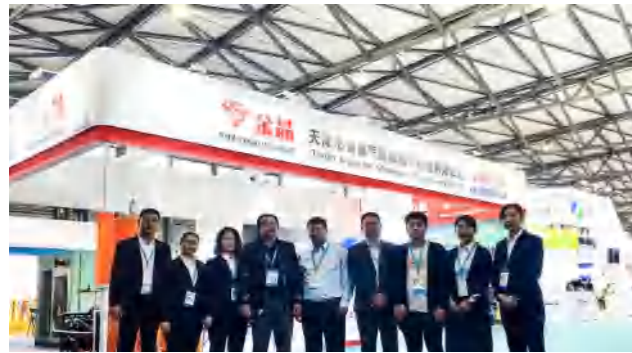
02 Honor Certificate



Contents

Our Exhibition

03



Low pressure piston air compressor	01
Medium pressure air compressor —Air-cooled	03
Medium pressure air compressor —Water-cooled	04
Medium pressure booster air compressor	05
Laser cutting supporting air compressor	06
High pressure air compressor - Air filling pump	07
High pressure helium/argon compressor	08
DG series high pressure air compressor	09

Low pressure piston air compressor

Reciprocating Air Compressor

Reciprocating air compressor is a machine that uses the reciprocating motion of piston or diaphragm in the cylinder to change the chamber volume and pump in and out air.

Jinjing reciprocating air compressors include low pressure piston air compressor, low pressure oil-free piston air compressor, special air compressor for bottle blowing machine, medium pressure booster compressor, medium pressure piston laser cutting combination machine and DG series high pressure air compressor.

The reciprocating air compressor designed by Jinjing have a long service life-thanks to the use of renewable components for quick and easy maintenance.

Features

1. The piston head adopts high-strength cast aluminum alloy, which has sufficient strength and hardness.
2. The cylinder adopts multi-blade design, which has high wear resistance and good heat dissipation effect.
3. Enlarged wall thickness square large-volume box, with low internal pressure and tall appearance.
4. Good vibration absorption, the crank tip has been treated with high-frequency smashing and has good abrasion resistance.
5. The connecting rod is made of high-quality alloy, with high strength and good stability.
6. The crushing stability is extremely high, the weight is light, and the inertia force is small.
7. Enlarge the protruding oil mirror to make it easier to observe the oil level.
8. Intelligent overload and lack of phase protector to avoid damage to the motor when voltage and lack of items.
9. Closed protective cover to improve safety protection.



Oil-injected piston air compressor

Model	Pressure (bar)	Displacement (m ³ /min)	Motor (kw/hp)	Cylinder (diameter*piece)	Tank (L)
JJPO.17/8	8	0.17	1.5/2	Φ 51x2	70
JJPO.25/8	8	0.25	2.2/3	Φ 65x2	80
JJPO.36/8	8	0.36	3/4	Φ 65x3	100
JJPO.48/8	8	0.48	4/5.5	Φ 80x2	120
JJPO.67/8	8	0.67	5.5/7.5	Φ 80x3	160
JJP1.0/8	8	1	7.5/10	Φ 90x3	230
JJP1.3/8	8	1.3	7.5/10	Φ 95x3	230
JJP1.3/8	8	1.6	11/15	Φ 105x3	300
JJP2.3/8	8	2.3	15/20	Φ 120x3	320
JJPO.3/12	12.5	0.3	3/4	Φ 65x2 Φ 51x1	100
JJPO.4/12	12.5	0.4	4/5.5	Φ 80x2 Φ 65x1	200



Medium pressure air compressor —Air-cooled

JJP0.6/12	12.5	0.6	5.5/7.5	φ 90x2 φ 65x1	300
JJP0.8/12	12.5	0.8	7.5/10	φ 95x2 φ 65x1	300
JJP1.0/12	12.5	1	11/15	φ 105x2 φ 80x1	300
JJP1.5/12	12.5	1.5	15/20	φ 120x2 φ 95x1	500
JJP0.4/15	15.5	0.4	4/5.5	φ 80x2 φ 65x1	155
JJP0.6/15	15.5	0.6	5.5/7.5	φ 90x2 φ 65x1	155
JJP0.8/15	15.5	0.8	7.5/10	φ 95x2 φ 65x1	230
JJP1.0/15	15.5	1	15/20	φ 105x2 φ 80x1	300
JJP1.5/15	15.5	1.5	15/20	φ 120x2 φ 95x1	320

Oil-free piston air compressor

Model	Pressure (Bar)	Displacement (m ³ /min)	Motor (kw/hp)	Cylinder (diameter*piece)	Tank (L)
OFP-0.18/8	8	0.18	1.5/2	φ 65x2	90
OFP-0.25/8	8	0.25	2.2/3	φ 65x2	90
OFP-0.36/8	8	0.36	3/4	φ 80x2	110
OFP-0.48/8	8	0.48	4/5.5	φ 80x2	110
OFP-0.67/8	8	0.67	5.5/7.5	φ 105x2	210
OFP-1.0/8	8	1	7.5/10	φ 105x3	210
OFP-1.5/8	8	1.5	11/15	φ 110x3	300
OFP-2.0/8	8	2	15/20	φ 110x3	320
OFP-2.0/8	8	2	15/20	φ 125x2 φ 100x1	320
OFP-2.6/8	8	2.6	18.5/25	φ 125x2 φ 100x1	320
OFP-3.2/8	8	3.2	22/30	φ 135x2 φ 100x1	320
OFP-0.4/10	10	0.4	4/5.5	φ 110x1 φ 65x1	210
OFP-0.6/10	10	0.6	5.5/7.5	φ 110x1 φ 65x1	210
OFP-0.8/10	10	0.8	7.5/10	φ 100x2 φ 80x1	210
OFP-1.2/10	10	1.2	11/15	φ 110x2 φ 80x1	300
OFP-1.6/10	10	1.6	15/20	φ 125x2 φ 100x1	320
OFP-2.6/10	10	2.6	18.5/25	φ 125x2 φ 100x1	320
OFP-3.2/10	10	3.2	22/30	φ 135x2 φ 100x1	320
OFP-0.6/16	15.5	0.6	5.5/7.5	φ 100x2 φ 80x1	210
OFP-0.8/16	15.5	0.8	7.5/10	φ 110x2 φ 80x1	210
OFP-1.2/16	15.5	1.2	11/15	φ 110x2 φ 80x1	320
OFP-1.6/16	15.5	1.6	15/20	φ 125x2 φ 100x1	320
OFP-2.6/16	15.5	2.6	18.5/25	φ 125x2 φ 100x1	320
OFP-3.2/16	15.5	3.2	22/30	φ 135x2 φ 100x1	320



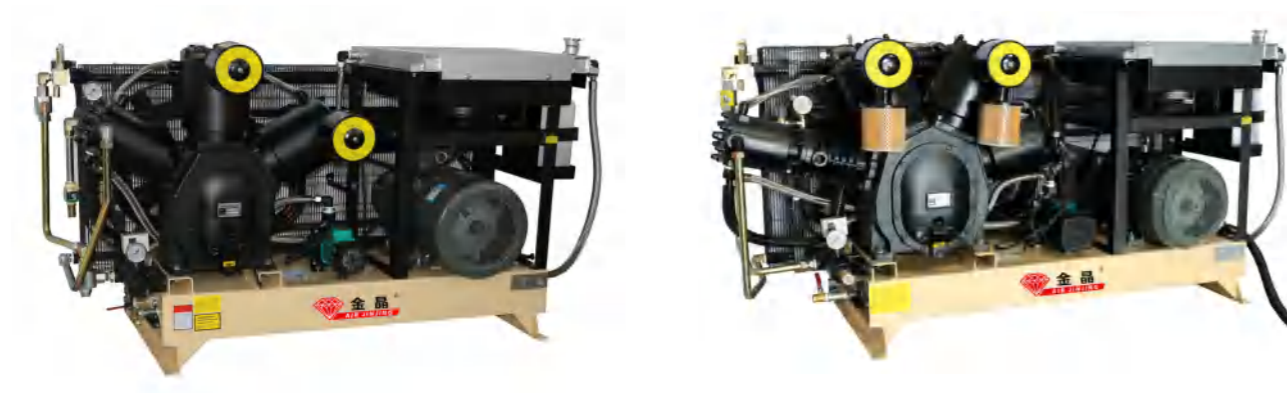
Features

1. Separately cast cylinder: Precision machined high-quality cast cylinder with deep radial fins, suitable for heavy-duty operation and longer service life.
2. Efficient fin type interstage cooler: It provides efficient cooling, improves the efficiency of the compressor, reduces the power consumption, reduces the exhaust temperature and prolongs the service life.
3. Balance cantilever crankshaft: Accurate balance ensures smooth operation, and the crank pin bushing can be replaced to protect the crankshaft from damage.
4. Fill synthetic lubricating oil before delivery: Reduce carbide accumulation, prolong oil change time, improve compressor performance and prolong service life.
5. Solid integral connecting rod: The end is precisely designed as a whole without fasteners that can cause looseness.
6. No load start unloading device: Prevent the motor from starting under load and avoid burning the motor.
7. Durable parts: Ensure that the exhaust pressure and flow are stable and reliable.
8. Multiple choices: Select multiple air compressor combinations according to requirements

Category	Model	Pressure (bar)	Displacement (m ³ /min)	Motor Power (kw)
Air cooling piston air compressor (single / unit)	MPP-AP-1.0	30/40	1	11
	MPP-AP-1.2		1.2	15
	MPP-AP-1.6		1.6	18.5
	MPP-AP-2.0		2	22
	MPP-AP-2.5		2.5	25
	2-MPP-AP-1.0		2	2*11
	2-MPP-AP-1.2		2.4	2*15
	2-MPP-AP-1.6		3.2	2*18.5
	2-MPP-AP-2.0		4	2*22
	2-MPP-AP-2.5		5	2*25



Medium pressure air compressor —Water-cooled

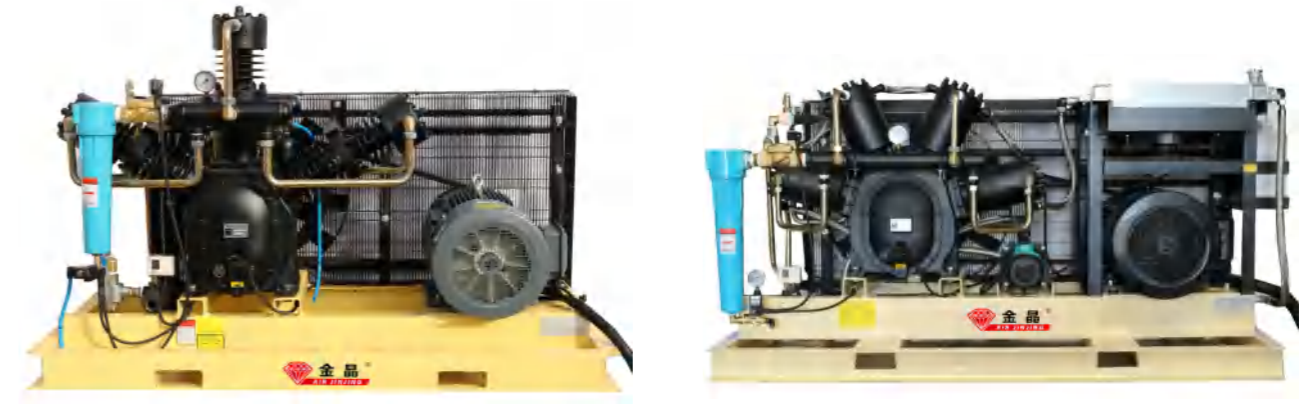


Features

1. Water cooled, reliable cooling, especially suitable for dusty occasions.
2. The excellent water cooling design keeps the piston machine in a low temperature state, low exhaust temperature.
3. The unique dual control system combines electric control and pneumatic control.
4. Excellent materials and exquisite workmanship.
5. Stable operation, low noise and continuous 24-hour operation.
6. It is equipped with automatic gas volume regulation device, which can operate economically.

Category	Model	Pressure (bar)	Displacement (m ³ /min)	Motor Power (kw)
Water cooling piston air compressor	MPP-WP-1.3	30/40	1.3	15
	MPP-WP-1.6		1.6	18.5
	MPP-WP-2.0		2	22
	MPP-WP-2.5		2.5	25
	MPP-WP-3.0		3	30

Medium pressure booster air compressor



Features

1. Excellent performance
2. Smooth operation
3. High efficiency and energy saving
4. Long service life
5. Low noise
6. Sufficient displacement

Category	Model	Pressure (bar)	Displacement (m ³ /min)	Motor Power (kw)
Air cooling booster air compressor	MPP-AB-4.0	30/40	4	18.5
	MPP-AB-6.0		6	25
	MPP-AB-8.0		8	30
Water cooling booster air compressor	MPP-WB-4.0		4	18.5
	MPP-WB-6.0		6	25
	MPP-WB-8.0		8	30
Water cooling oil-free booster air compressor (single / integrated)	MPP-OB-4.0		4	18.5
	MPP-OB-6.0		6	25
	MPP-OB-8.0		8	30

Reciprocating Air Compressor



Laser cutting supporting air compressor

High pressure air compressor - Air filling pump

Reciprocating Air Compressor



Features

- 1.Integrated compressor
- 2.High efficiency and energy saving
- 3.Pressure stability
- 4.Convenient transportation
- 5.Convenient maintenance
- 6.Long operation life ,low cost

Category	Model	Pressure (bar)	Displacement (m ³ /min)	Motor Power (kw)
Laser cutting supporting air compressor	MPP-LC-1.2	30/40	1.2	15
	MPP-LC-1.6		1.6	18.5
	MPP-LC-2.0		2.0	22
	MPP-LC-2.5		2.5	25

Features

1. Set pressure automatic shutdown design, no need for human monitoring of filling pressure;
2. The lubricating oil level and oil pressure of the unit are protected to extend the service life;
3. Full magnetic start, the motor has overload protection, which effectively protects the operation of the unit;
4. The use of fully automatic unloading system reduces the load of the unit;
5. The fully automatic sewage system ensures that the air quality of the unit meets the international breathing air standards for a long time;
6. The use of the exhaust pressure regulator valve ensures that the machine's exhaust gas passes through the filter to ensure the quality of the unit's exhaust gas;
7. The automatic monitoring device for the steering of the filling pump avoids the wrong operation of the unit and simplifies the wiring work of the unit;

Model	Pressure (bar)	Displacement (L/min)	Motor Power	Filling time (min)
HPP-6/EM	225/300	80	2.2KW(Electric)	25
HPP-8/EM	225/300	135	3KW(Electric)	15
HPP-11/EM	225/300	195	4KW(Electric)	10
HPP-6/ET	225/300	100	3KW(Electric)	20
HPP-13/ET	225/300	235	4KW(Electric)	8.5
HPP-16/ET	225/300	315	5.5KW(Electric)	6.3
HPP-6/SH	225/300	100	5.5HP(Diesel/gasoline)	25
HPP-13/SH	225/300	235	8.4HP(Diesel/gasoline)	8.5
HPP-16/SH	225/300	315	8.4HP(Diesel/gasoline)	6.3
HPP-13/DY	225/300	235	9HP(Diesel/gasoline)	8.5
HPP-16/DY	225/300	315	9HP(Diesel/gasoline)	6.3



High pressure helium/argon compressor



Features

1. Easy to install and maintain
2. Good balance and low vibration
3. Low maintenance workload and operating cost
4. Low compression ratio and temperature rise
5. No special basic requirements
6. Designed for continuous operation, suitable for heavy-duty work
7. The maximum pressure can reach 35MPa

Model	Pressure (bar)	Displacement (Nm ³ /min)	Motor Power	Cooling Method
HPP-1.5/200A	200	1.5	37	Air Cooling
HPP-1.5/200W	200	1.5	37	Water Cooling
HPP-2.5/200A	200	2.5	55	Air Cooling
HPP-2.5/200W	200	2.5	55	Water Cooling
HPP-5/200A	200	5	110	Air Cooling
HPP-5/200W	200	5	110	Water Cooling
HPP-7/200A	200	7	132	Air Cooling
HPP-7/200W	200	7	132	Water Cooling

DG series high pressure air compressor



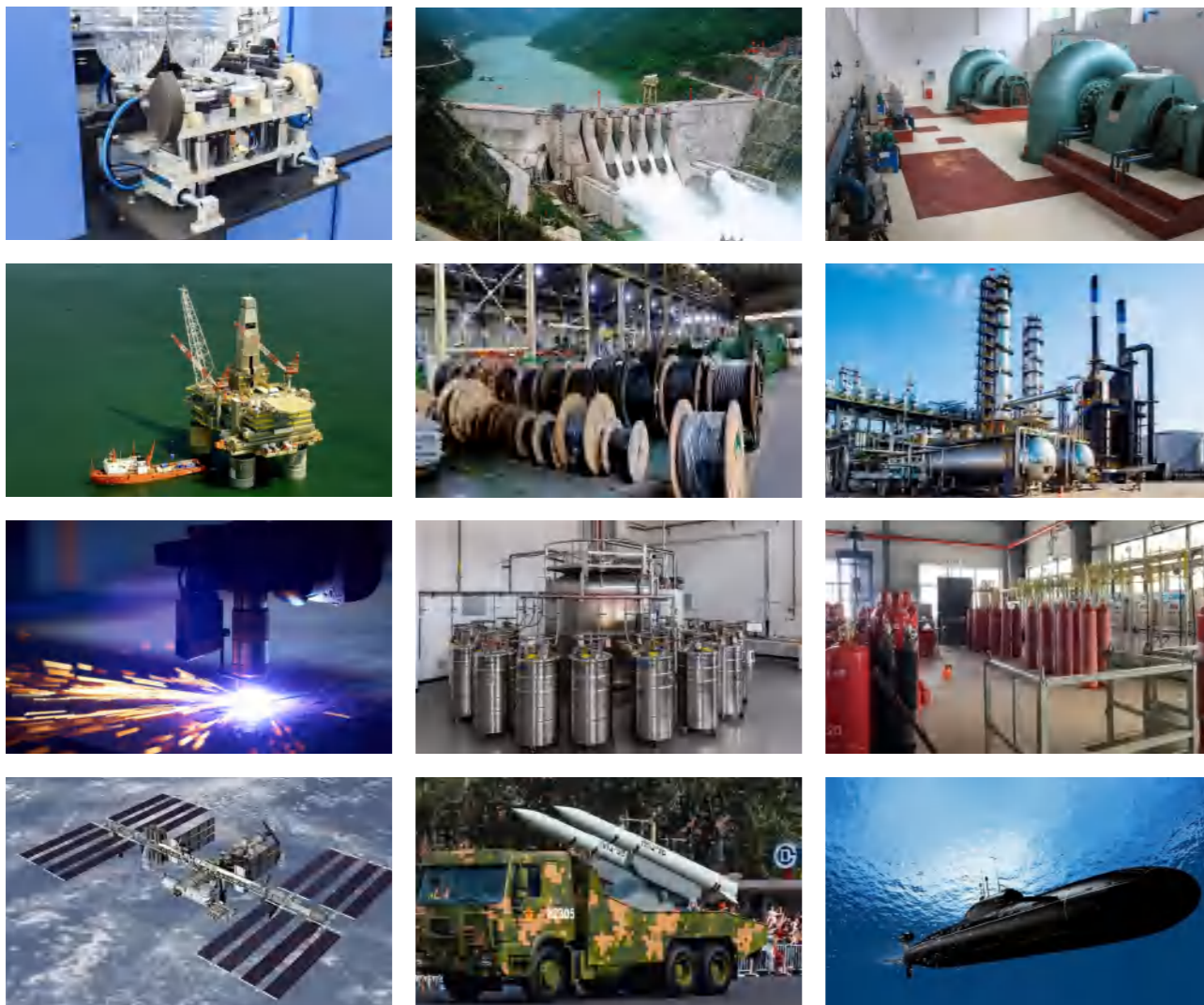
Features

1. Air-cooled host, adapt to various high pressure conditions.
2. Multi stage compression to reduce the load of each stage.
3. Deep fin cylinder to increase the operation reliability of the unit.
4. Strong matching power, large displacement.
5. Heavy duty inlet filter is equipped with silencer.
6. It has low energy consumption and long life.

Model	Pressure (mpa)	Power (kw)	Displacement (m ³ /min)	Series (n)	Lubrication Method
HPP-3/100-DG	10	55-6	3	4	Splash
HPP-3/150-DG	15	55-6	3	4	
HPP-3/250-DG	25	55-6	3	4	
HPP-5/100-DG	10	75-6	5	4	
HPP-5/150-DG	15	75-6	5	4	
HPP-5/250-DG	25	75-6	5	4	
HPP-5/40-DG	4	75-6	5	3	
HPP-5/60-DG	6	75-6	5	3	
HPP-6/40-DG	4	75-6	6	3	
HPP-6/60-DG	6	75-6	6	3	

Application Field

PET bottle blowing, 1-40M³/min 25--40BAR
Conventional hydropower station, turbine speed and phase regulation, surge tank gas supply, turbine start
Air conditioning/valve/instrument/piping industry leak detection
CN industry leak detection-gas cylinder/valve/modified car pipeline 1-3M³/min250BAR
laser cutting
Helium recovery
Steel plant, alumina plant, cable plant, chemical plant
Marine geophysical prospecting, 1--40M³/min 200--250BAR
Pressure vessel, pressure valve, pressure pipeline inspection (automobile brake, manufacturer inspection agency)
Aerospace
National Defense Military: Missile Submarine



Jinjing Compressor Tips

Matters needing attention:

1. Check the screws or nuts of all parts for looseness.
2. Whether the belt is properly tightened.
3. Whether the pipeline is normal and the oil level is appropriate.
4. Whether the wires and electrical switches comply with the regulations and whether the boundary is correct.
5. Whether each wheel foot fulcrum is fixed or stable.
6. Compression means that the pulley can be easily turned by hand.
7. Before the compressor works, it is best to idle for more than 2 to 3 minutes before normal operation.
8. Check whether the running direction is the same as that indicated by the indicating arrow. If not, please replace any two of the three power supplies for the three-phase motor.
9. The air cleaner should always check whether there is pollution attached. The filter cotton should always be removed for cleaning (with air oil) or replaced to maintain good air filtration effect.
10. After using the air compressor every day, unscrew the drain valve of the drum to remove the accumulated water and oil stain in the drum.
11. The cylinder head and copper pipe of air compressor are heated due to air compression. Generally, the temperature is very high, which is an inevitable phenomenon.
12. In case of power failure or use of the air compressor during operation, please cut off the power supply to ensure safety.